

#4

CONSTANCE & NANO

ENGINEERING ADVENTURE!

WATER WORKS

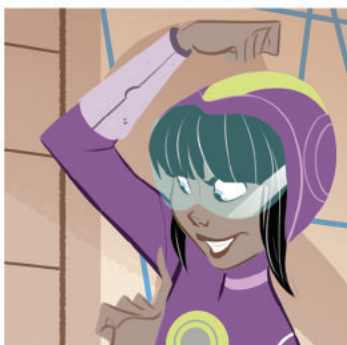


 **swe**[®]
Society of Women Engineers
Aspire / Advance / Achieve

CONSTANCE & NANO

ENGINEERING ADVENTURE!

After making a keen observation about the water levels at the lake in her community Constance was brave enough to speak out and start a much-needed conversation about water conservation. With the help of Nano she was able to launch her next exciting project!



Plus, learn more about **SWENext**, a way for students to become part of the **Society of Women Engineers**, the world's largest advocate and catalyst for change for women in engineering and technology!

Become part of **SWE** and **#BeThatEngineer**
at **swe.org/swenext**



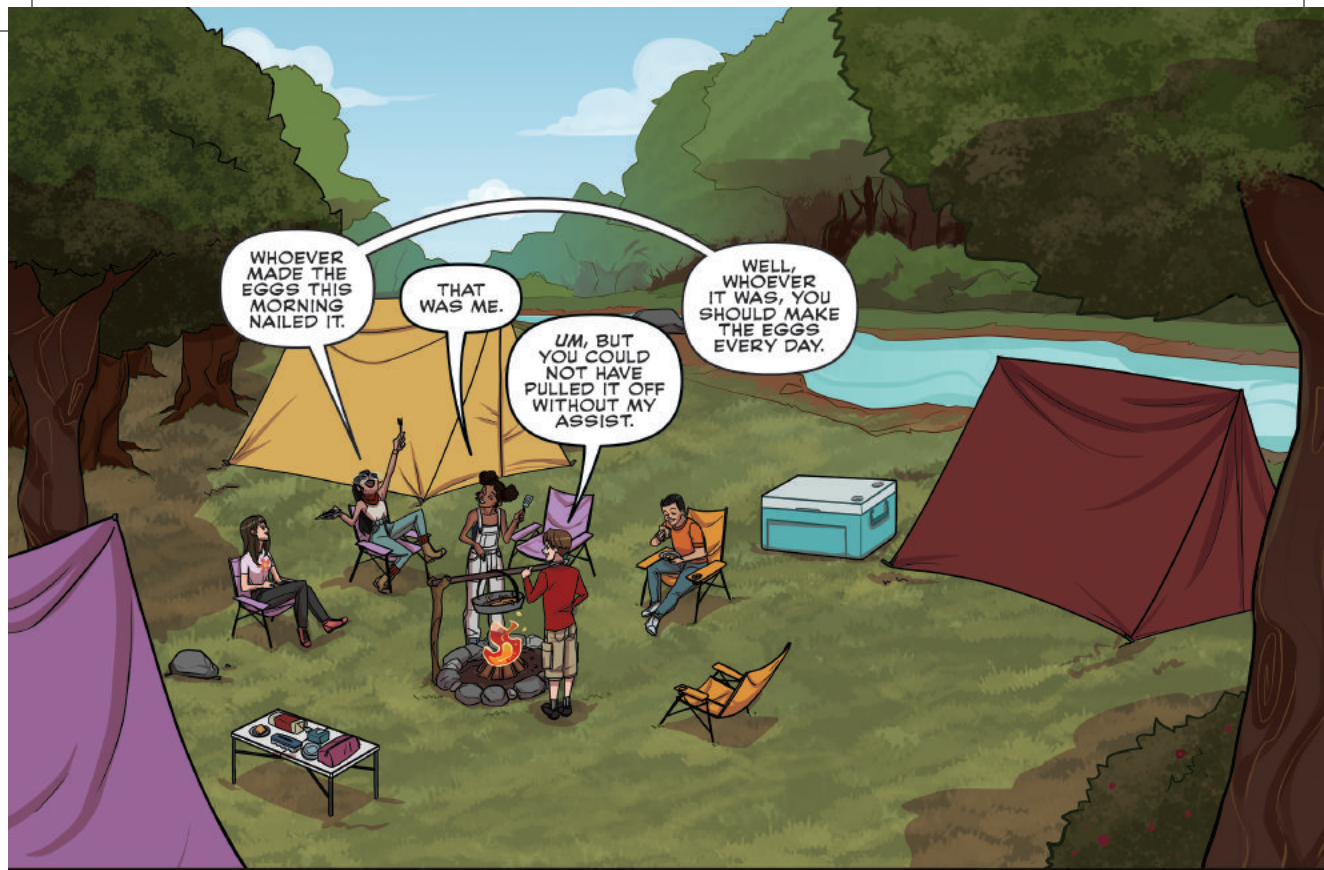
Written by **Kelly Thompson**
Art by **Ile Gonzalez and Shawn Lee**
Lettered by **Shawn Lee**
Editor **Sarah Gaydos**

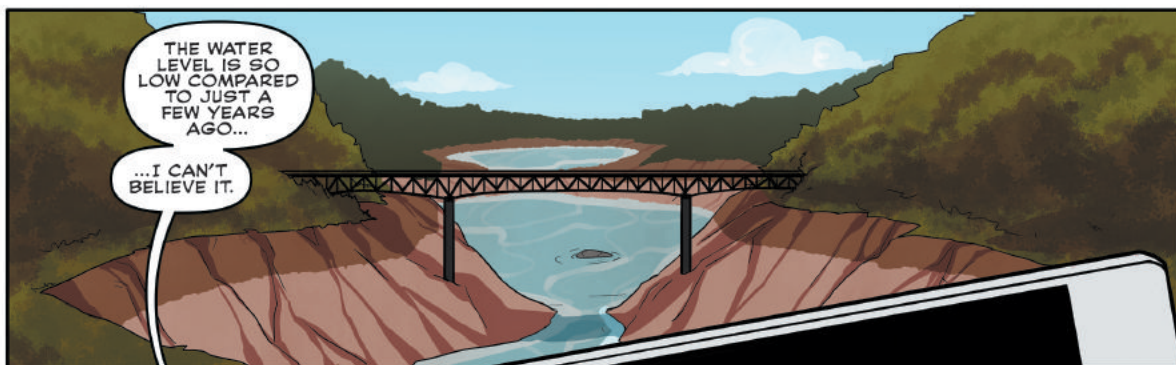
www.SWE.org

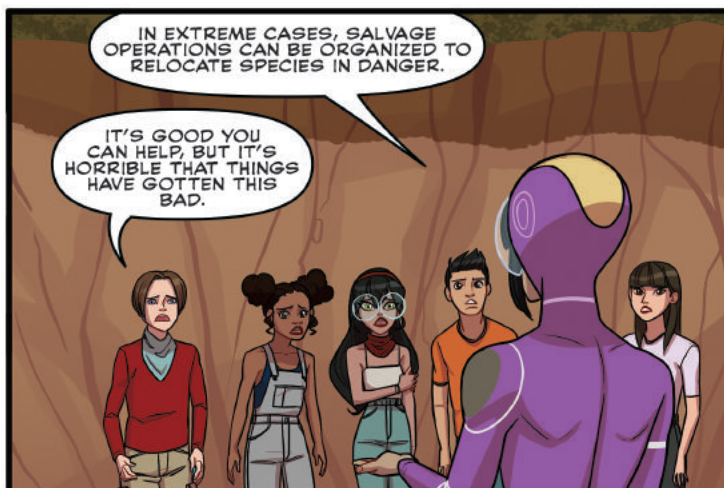
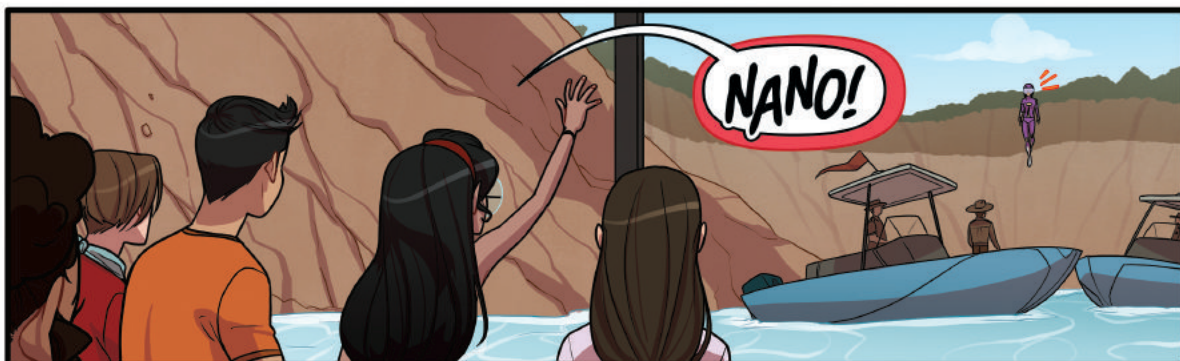


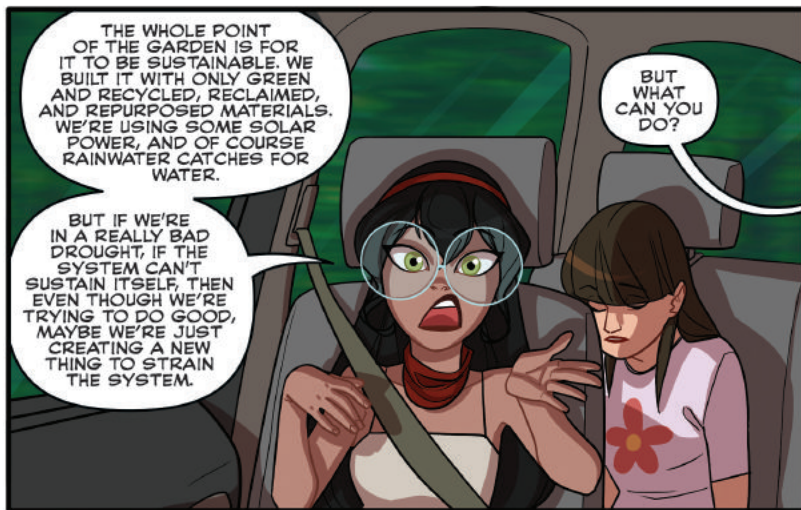
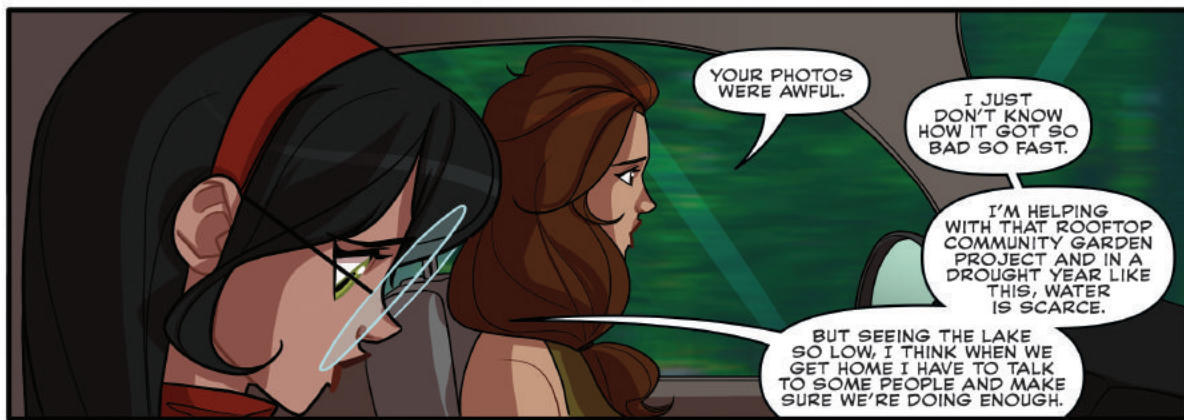
Facebook: facebook.com/SWEorg
Twitter: [@SWEtalk](https://twitter.com/SWEtalk)
YouTube: youtube.com/@societywomenengineers
Instagram: instagram.com/swetalk

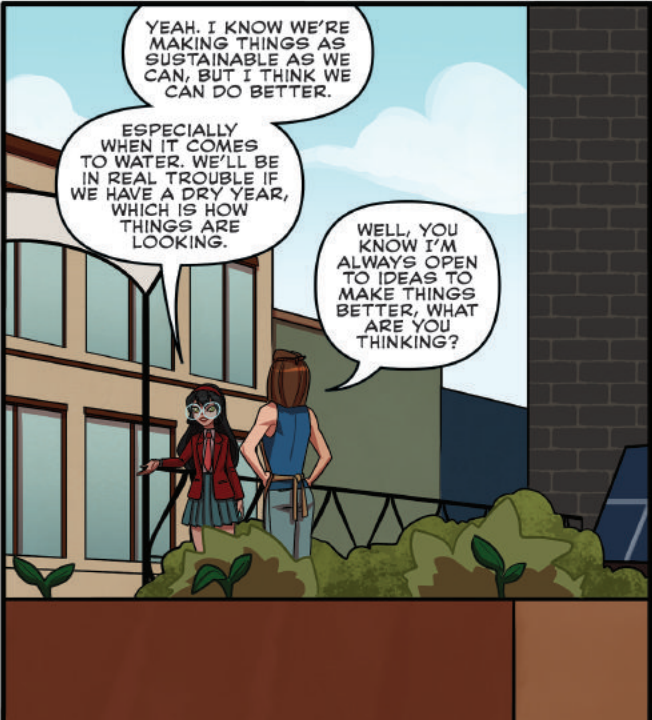
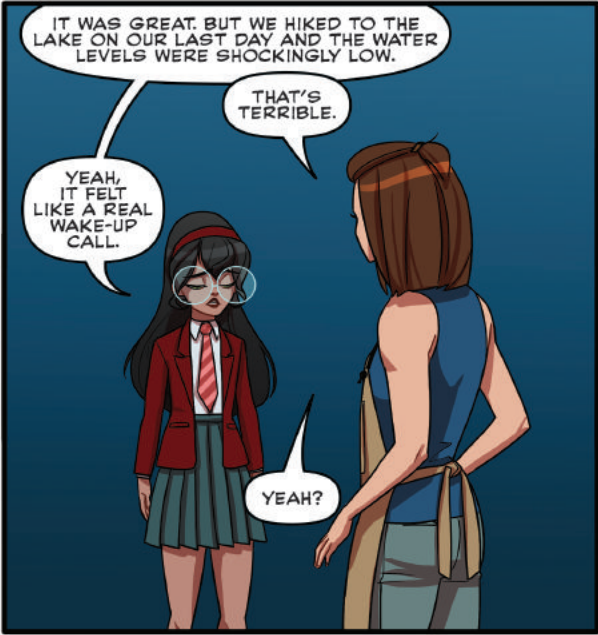
CONSTANCE & NANO: ENGINEERING ADVENTURE! #4, OCTOBER 2022, FIRST PRINTING.
© & © The Society of Women Engineers. All Rights Reserved.

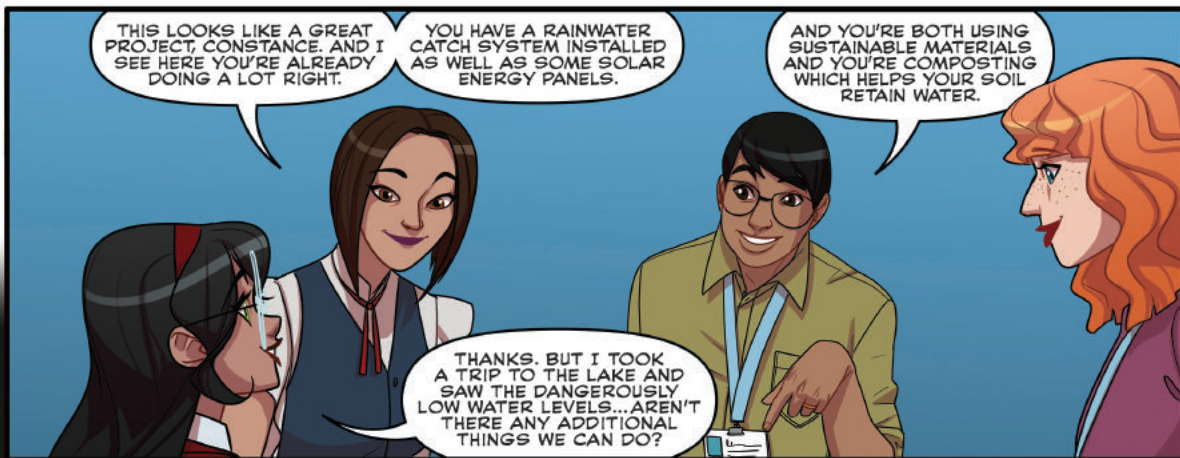


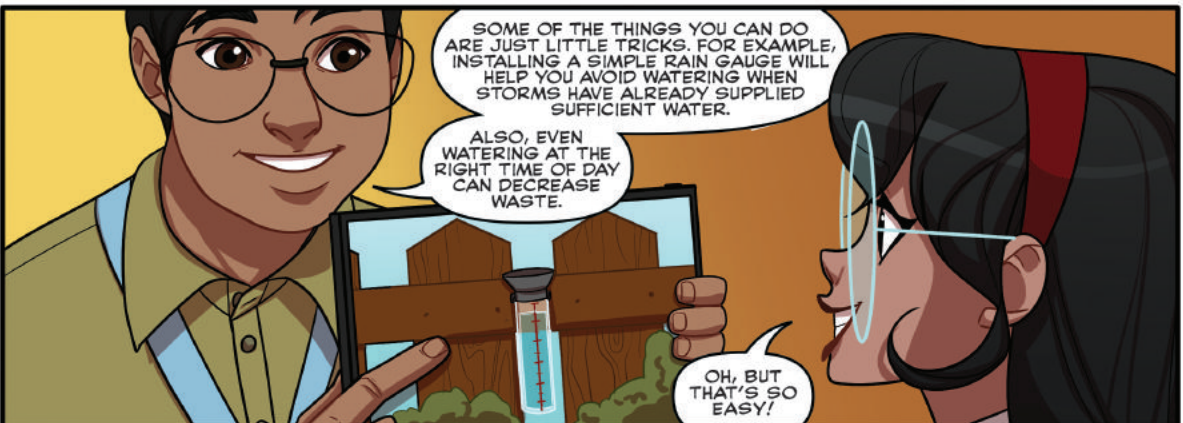
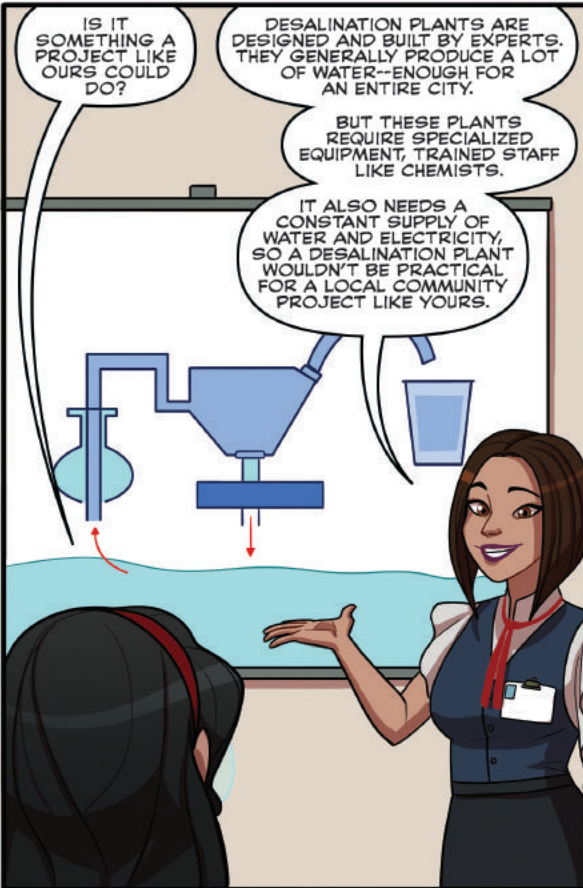
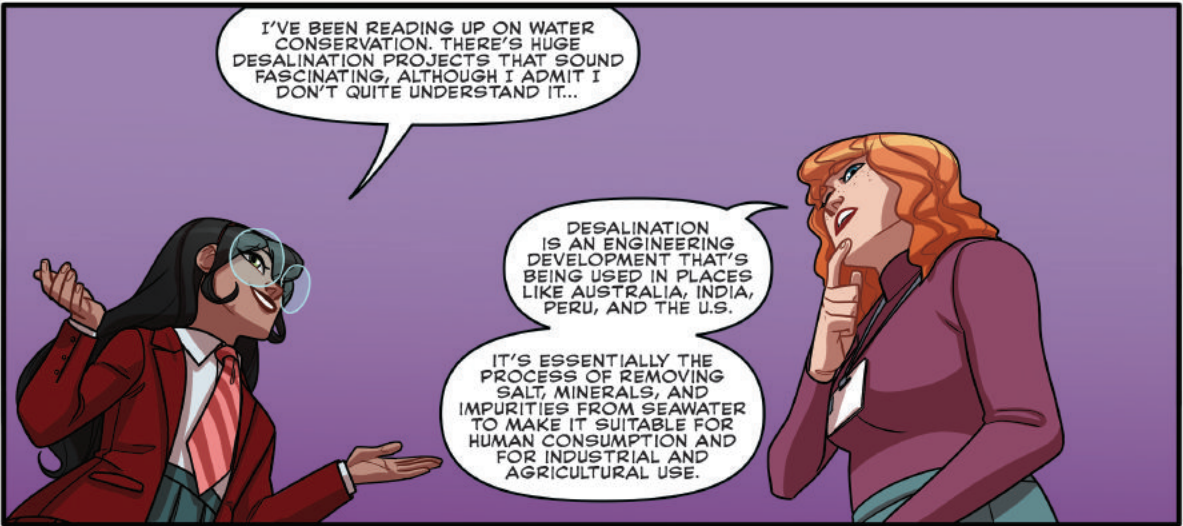


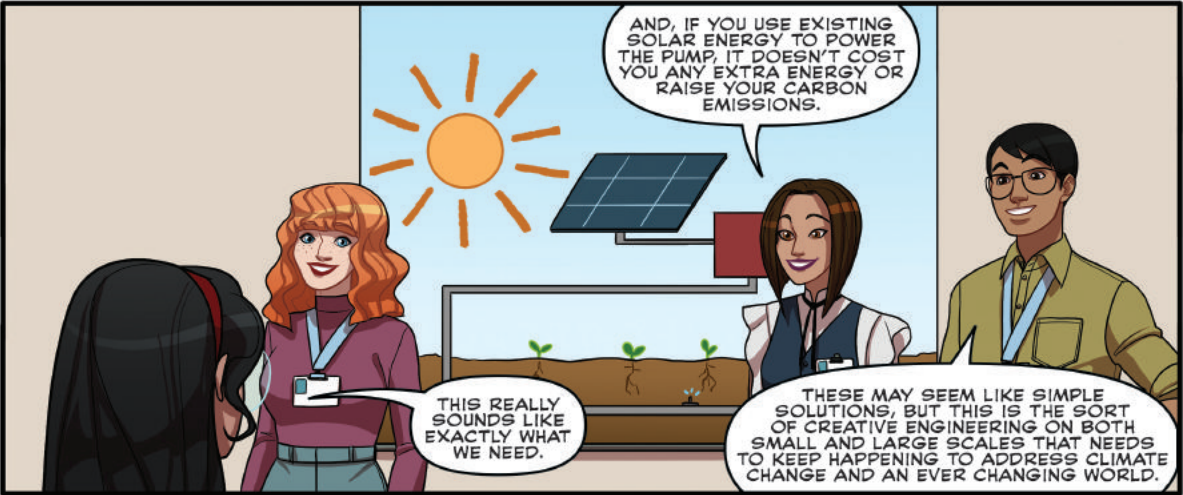
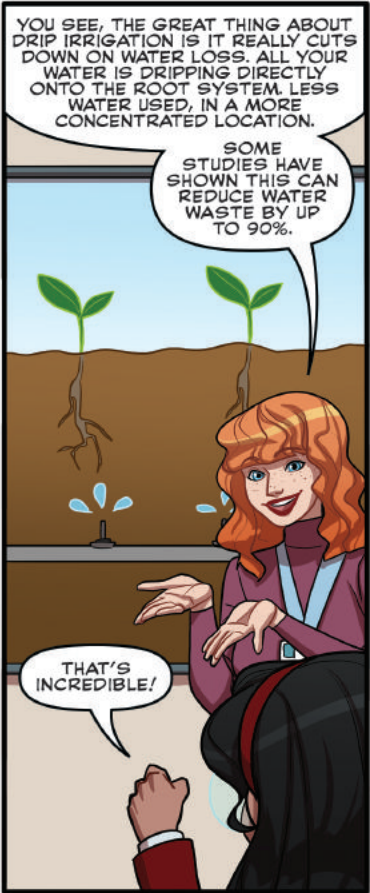
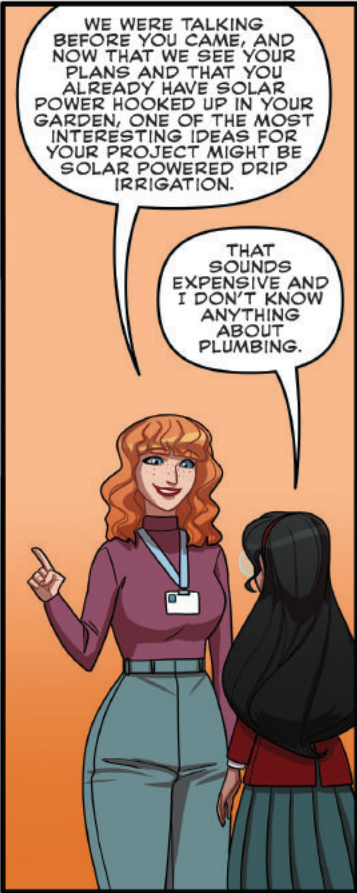




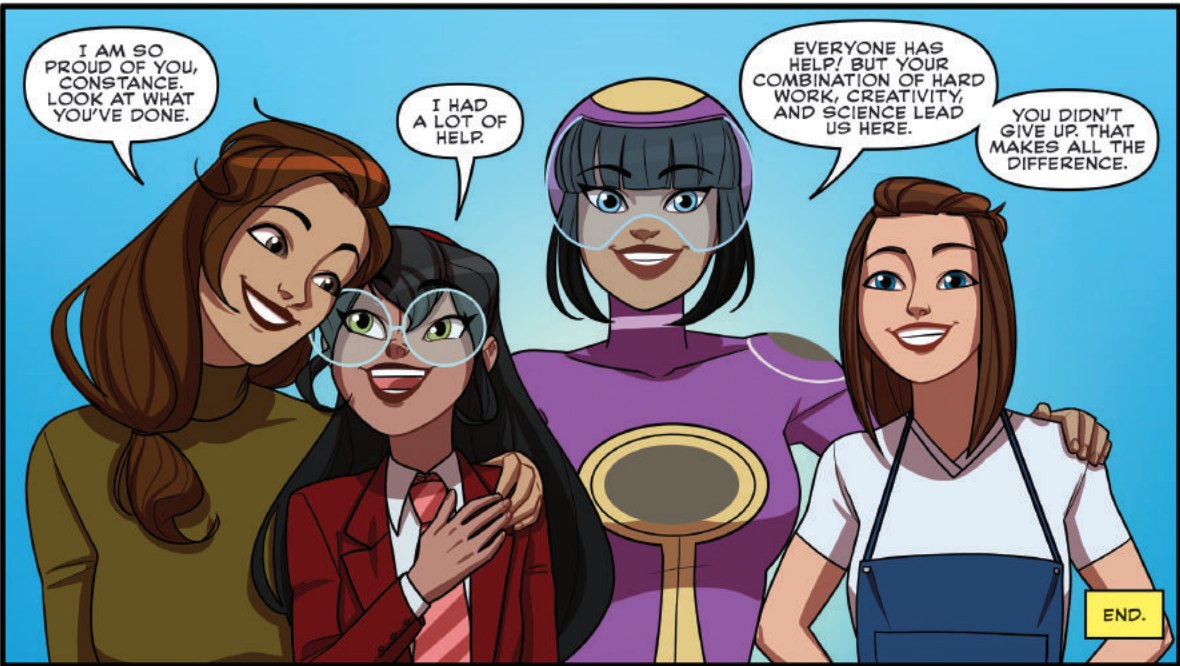




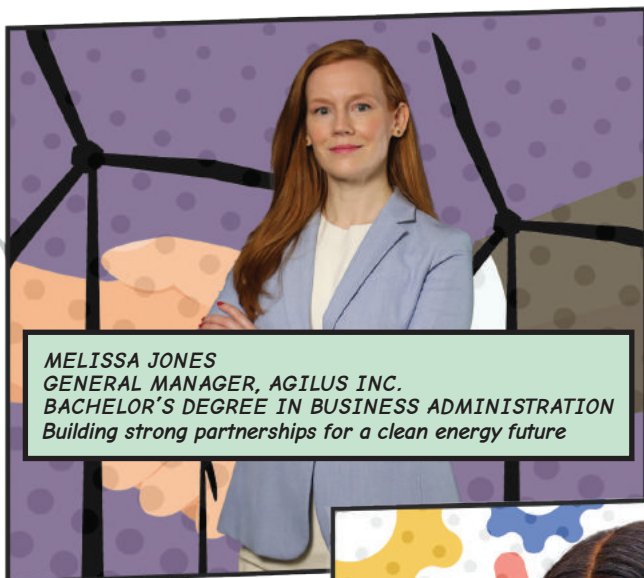




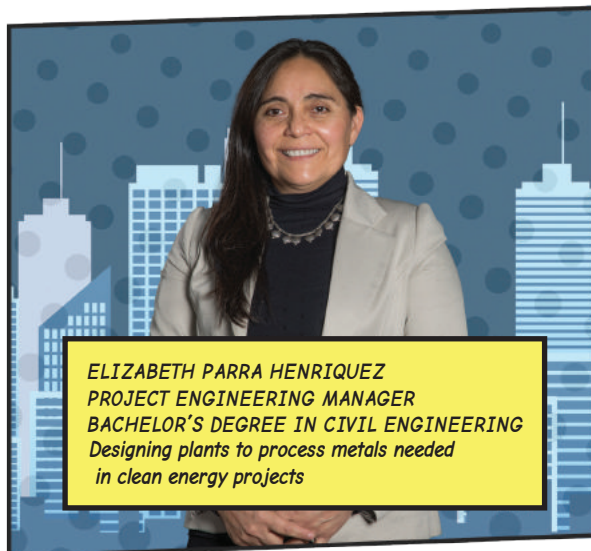




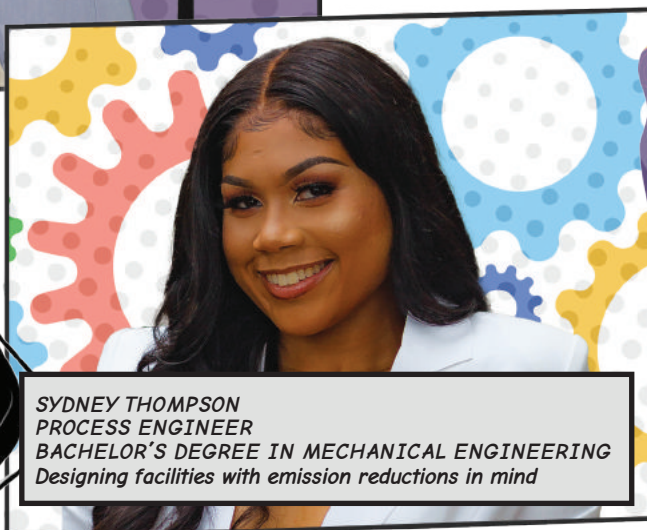
ENGINEERING ADVENTURES TAKE PLACE EVERY DAY AT **BECHTEL**.



MELISSA JONES
GENERAL MANAGER, AGILUS INC.
BACHELOR'S DEGREE IN BUSINESS ADMINISTRATION
Building strong partnerships for a clean energy future



ELIZABETH PARRA HENRIQUEZ
PROJECT ENGINEERING MANAGER
BACHELOR'S DEGREE IN CIVIL ENGINEERING
Designing plants to process metals needed in clean energy projects



SYDNEY THOMPSON
PROCESS ENGINEER
BACHELOR'S DEGREE IN MECHANICAL ENGINEERING
Designing facilities with emission reductions in mind



**SEE HOW OUR TEAM MEMBERS
USE THEIR **SCIENCE**,
TECHNOLOGY, **ENGINEERING**, AND
MATH SKILLS TO MAKE THE
WORLD A BETTER PLACE.**

Bechtel is proud to partner with Constance, Nano, and the Society of Women Engineers to encourage future engineers like you!

WWW.BECHTEL.COM





HAVE YOUR OWN ENGINEERING ADVENTURES! JUST LIKE CONSTANCE AND NANO ...



SCAN ME

If you're a girl 13 or older, you can be a SWENexter! It's a fun way to learn how to **#BETHATENGINEER** and join SWE for free. You can even start your own SWENext Club and make your own engineering adventures!

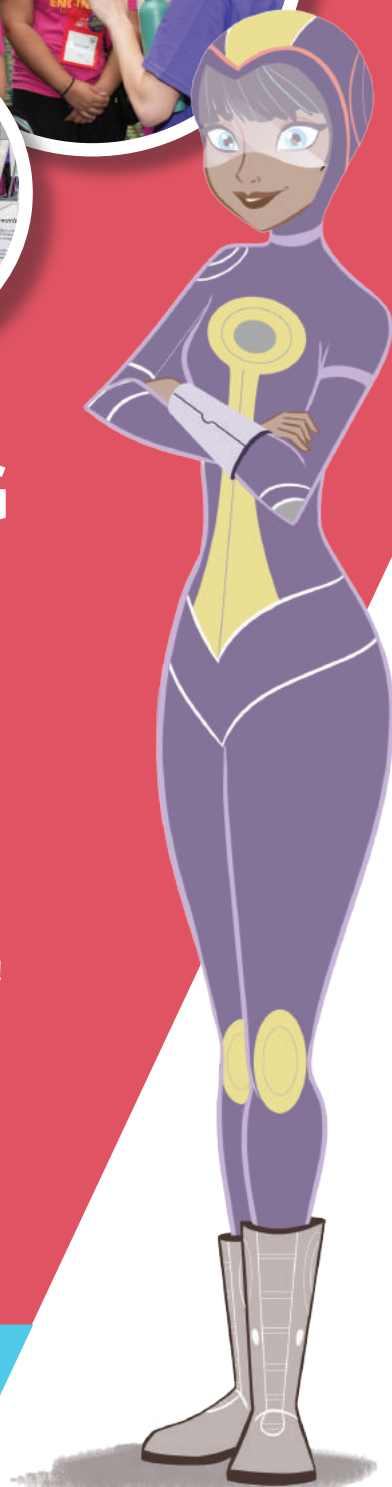
Are you 12 or under? You can join, too ... you just need a parent to join with you.



SCAN ME

Parents and other adults—
you're also welcome to join!

JOIN CONSTANCE AND NANO AND DISCOVER THE
EXCITING, REWARDING WORLD OF ENGINEERING.
SIGN UP FOR SWENEXT TODAY AT SWE.ORG/SWENEXT



sweNEXT



SWENEXT IS A FUN
WAY TO BECOME PART
OF THE **SOCIETY OF
WOMEN ENGINEERS.**

- Attend engineering events designed for girls
- Discover SWE scholarships to help pursue your dreams
- Meet women engineers ready to mentor and inspire you
- Do cool engineering projects
- Participate in exciting contests
- Get SWE goodies
- ... and much more.



swe **NEXT**

Watch
me
CHANGE
the
WORLD



Find your inspiration

Are you a STEM student who loves to be involved in the community? Or maybe you love to learn and need more hands-on experience. A SWENext Influencer is a STEM-involved student leader who shares their knowledge and experience with SWENext programming across SWE/SWENext media platforms.

Learn more @ swe.org/swenext

FOLLOW US 



@SWENext

